

# MailStore Client Deployment

A MailStore Server installation deploys the MailStore Client as a Windows Installer package (MSI) that can be installed on client machines using software distribution. You can either find the MSI package via the link on your desktop *Install MailStore Client on other Computers* or in the *Setup-<version>* subfolder of your MailStore Server installation folder.

This article describes the software distribution through Active Directory group policies.

## Contents

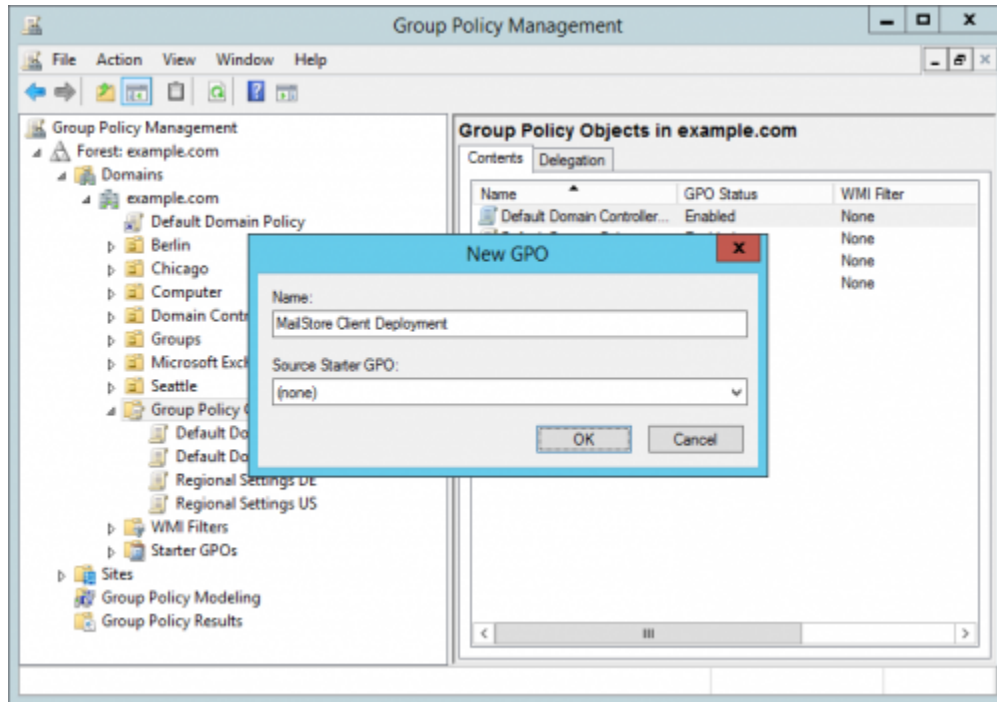
- [1 Installation](#)
- [2 Updating](#)
- [3 Configuration](#)
  - [3.1 Installing the ADMX Template](#)
- [4 Uninstalling](#)

## Installation

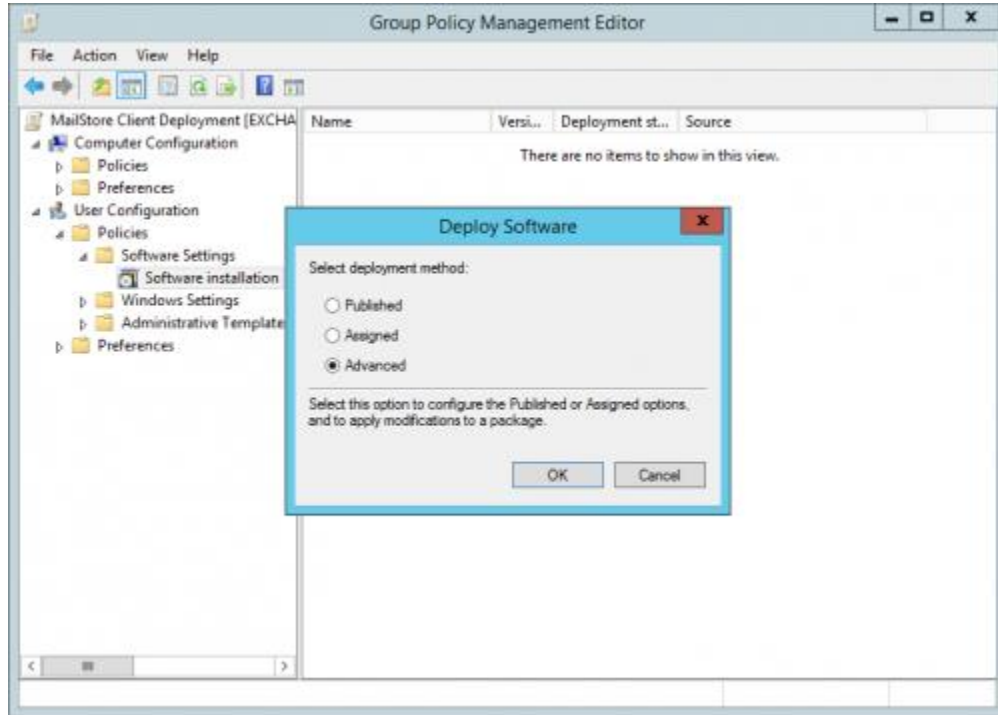
To distribute the MailStore MailStore Client via Active Directory you have to copy its MSI package to a share on your server that is accessible to all domain users. After the distribution has been set up the MailStore MailStore Client will be installed automatically upon the next user login. This process is transparent to users and needs no interaction on their behalf.

Set up the software distribution as follows:

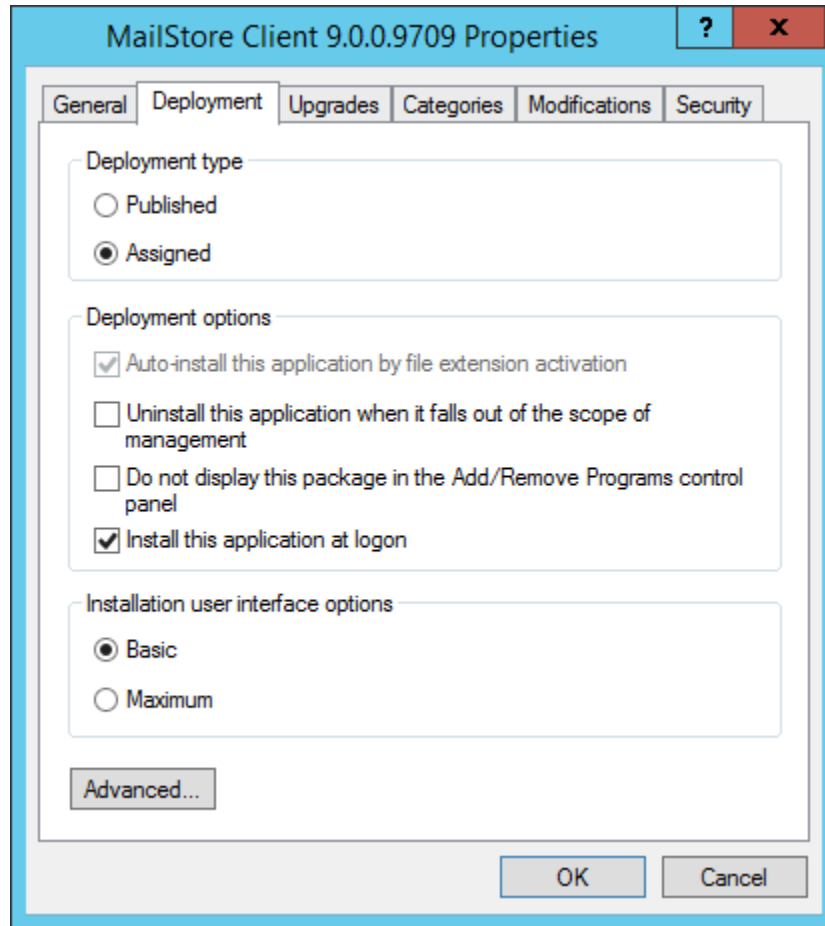
- Open the *Group Policy Management Console* on your domain controller.
- Right-click on the administrative folder *Group Policy Objects*
- Select *New* and create a new group policy object called *MailStore Client Deployment*.



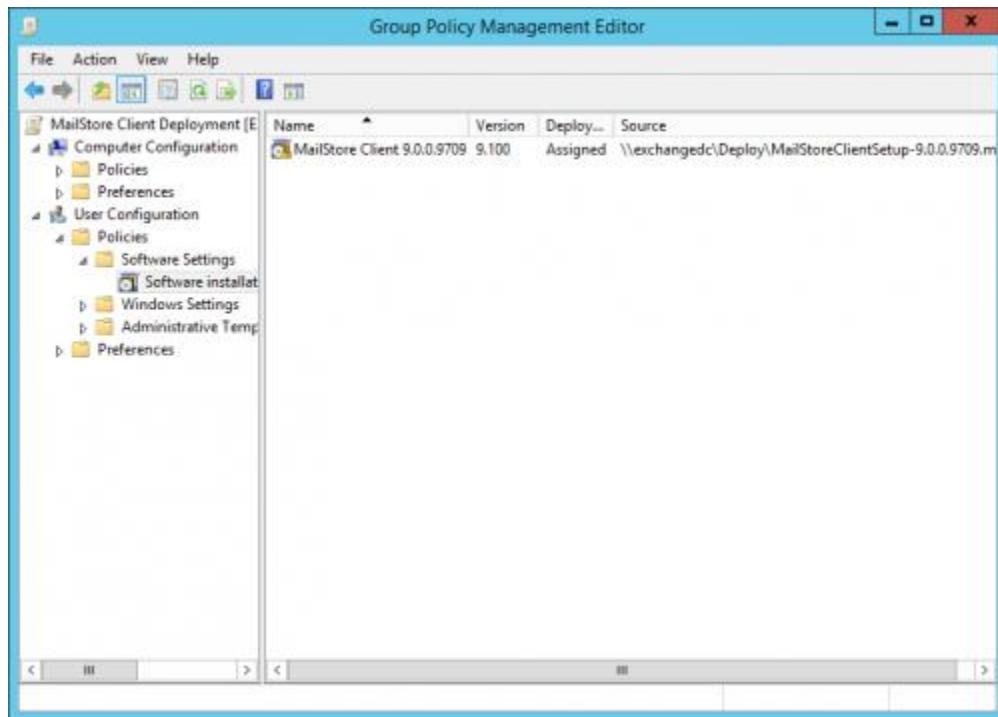
- Right-click on the new GPO and select *Edit...*
- Expand *User Configuration > Policies > Software Settings*.
- Right-click on *Software installation*.
- Select *New and Package...*
- Select the above mentioned MSI package. Please note that the path for the file must be entered in UNC notation (e.g. \\Server\Setup\MailStoreSetup...) and that domain users need to have read-access to this share.
- In the following dialog window, select *Advanced* and click *OK*.



- On the next screen, please set the options on the *Deployment* tab as shown below:



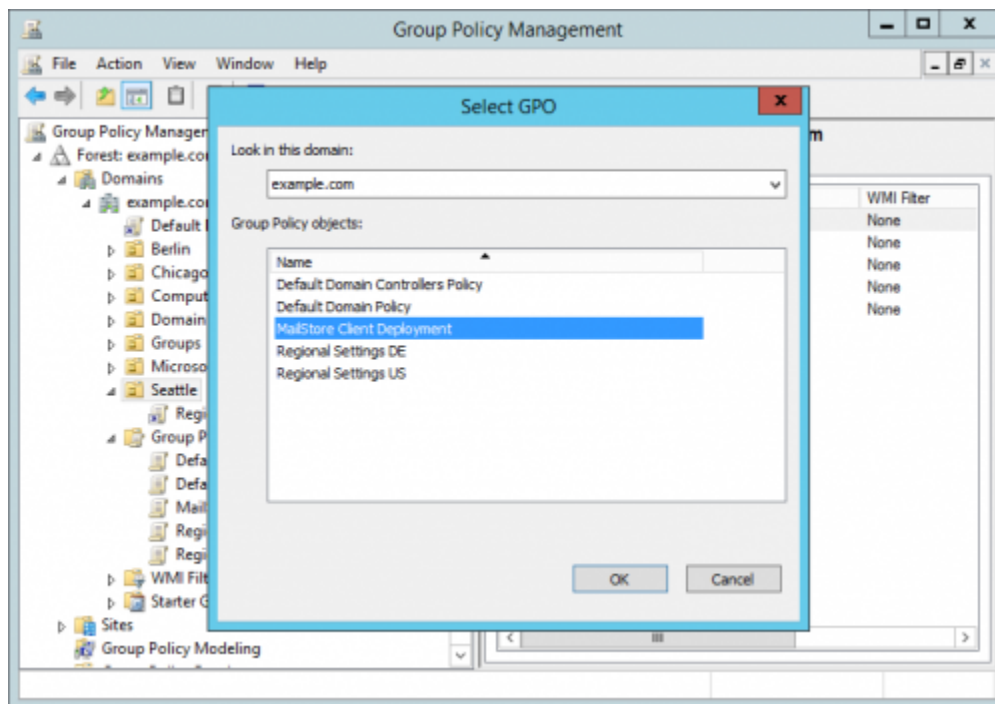
- Click on *OK* to confirm all settings.
- The group policy should look similar to the one shown below:



- Close the group policy editor.

The group policy is now configured and can be linked to the corresponding user objects. Linking is done using organizational units (OU).

- Highlight the organizational unit (OU) which contains the desired user objects, right-click on the OU (*Seattle* in the example below) and select the option *Link an Existing GPO...*
- In the dialog window *Select GPO*, highlight *MailStore Client Deployment* and click on *OK*.



- Through the organizational unit the group policy is now linked to the user objects contained therein. It will become active the next time users log on to the Windows clients.

**Please note:** To avoid problems when installing software using group policies, the following settings should be applied via group policy for computer objects which represent the Windows clients of MailStore users:

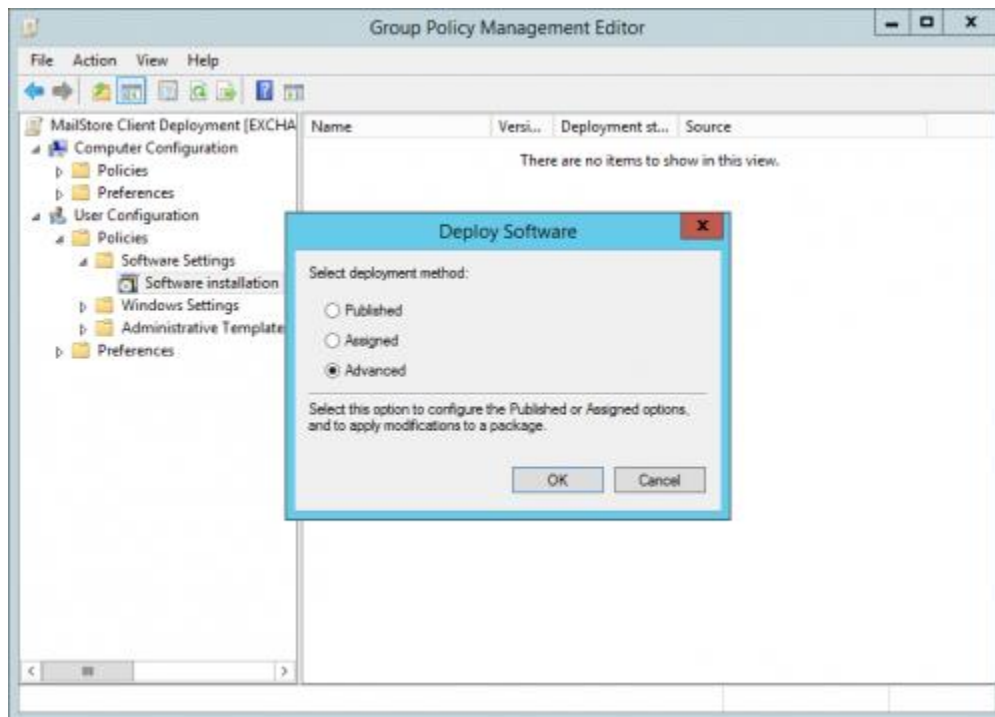
- *Computer Configuration > Administrative Templates > System > Scripts > Run logon scripts synchronously*
- *Configuration > Administrative Templates > System > Logon > Always wait for the network at computer startup and logon*

## Updating

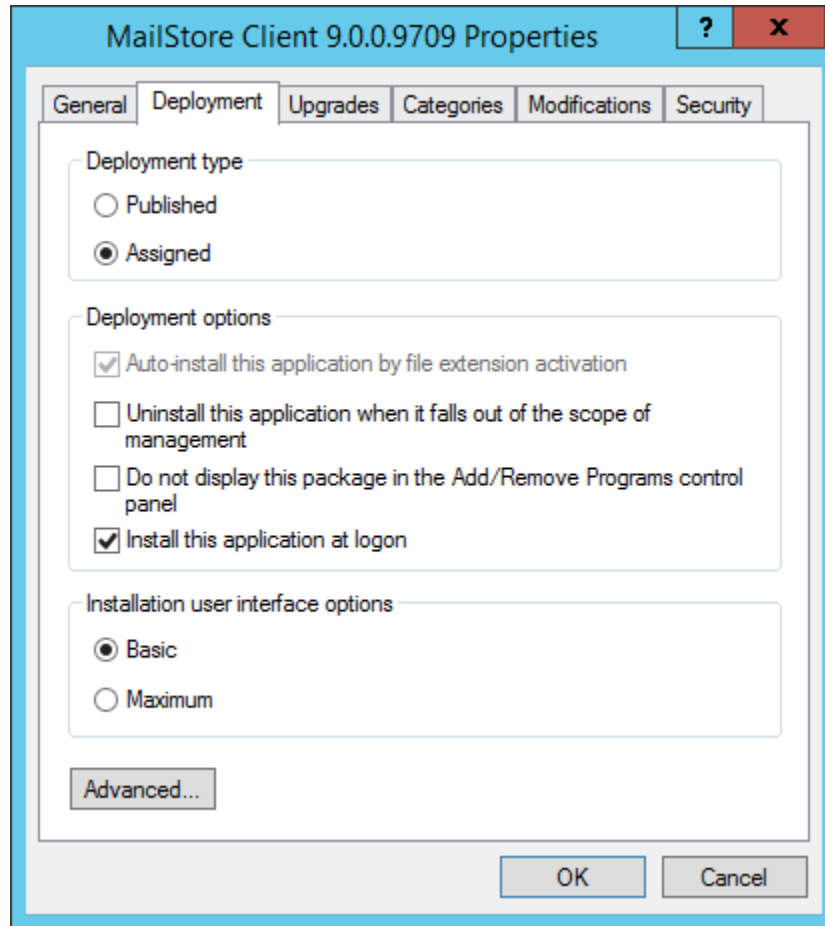
The MailStore Client MSI installs basically only a loader that actually loads the latest MailStore Client components from the MailStore Server. In case this loader needs to be updated itself, group policies can do the update automatically on the MailStore user computers. To edit an existing *MailStore Client Deployment* group policy so that an automatic update of the clients can be performed, please proceed as follows:

- Open the *Group Policy Management Console* on your domain controller.
- Navigate to the administrative folder *Group Policy Objects*.

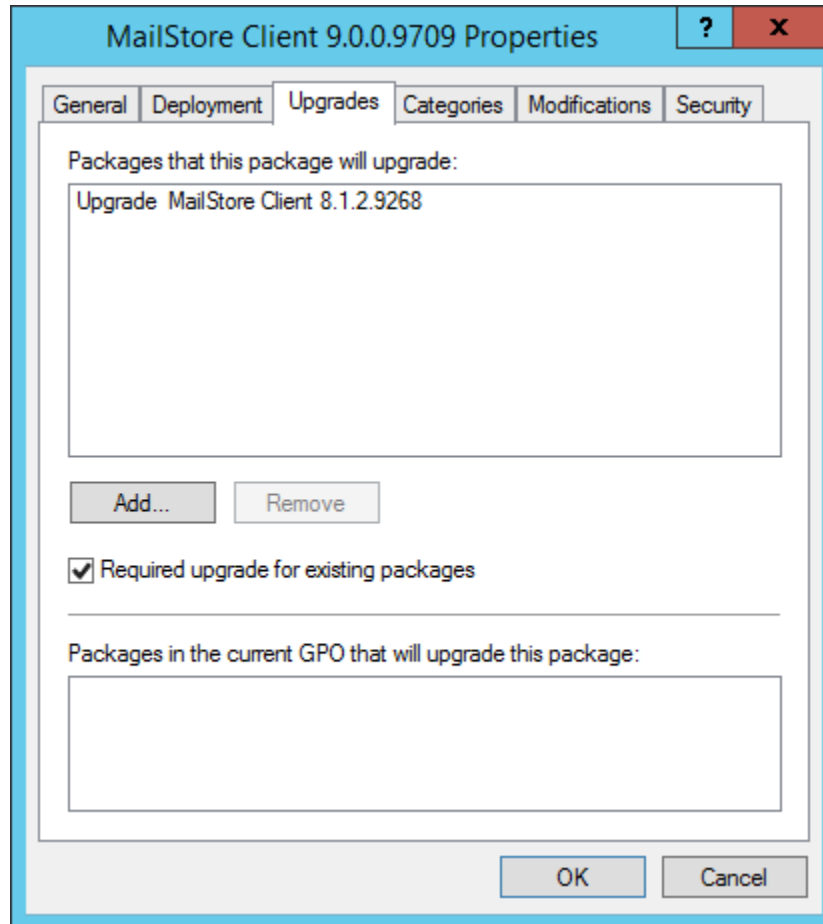
- Right-click on the existing *MailStore Client Deployment* GPO and select *Edit...*
- Expand *User Configuration > Policies > Software Settings*.
- Right-click on *Software installation*.
- Select *New and Package...*
- Select the updated MailStore Client MSI package. Please note that the path for the file must be entered in UNC notation (e.g. \\Server\Setup\MailStoreSetup...) and that domain users need to have read-access to this share.
- In the following dialog window, select *Advanced* and click *OK*.



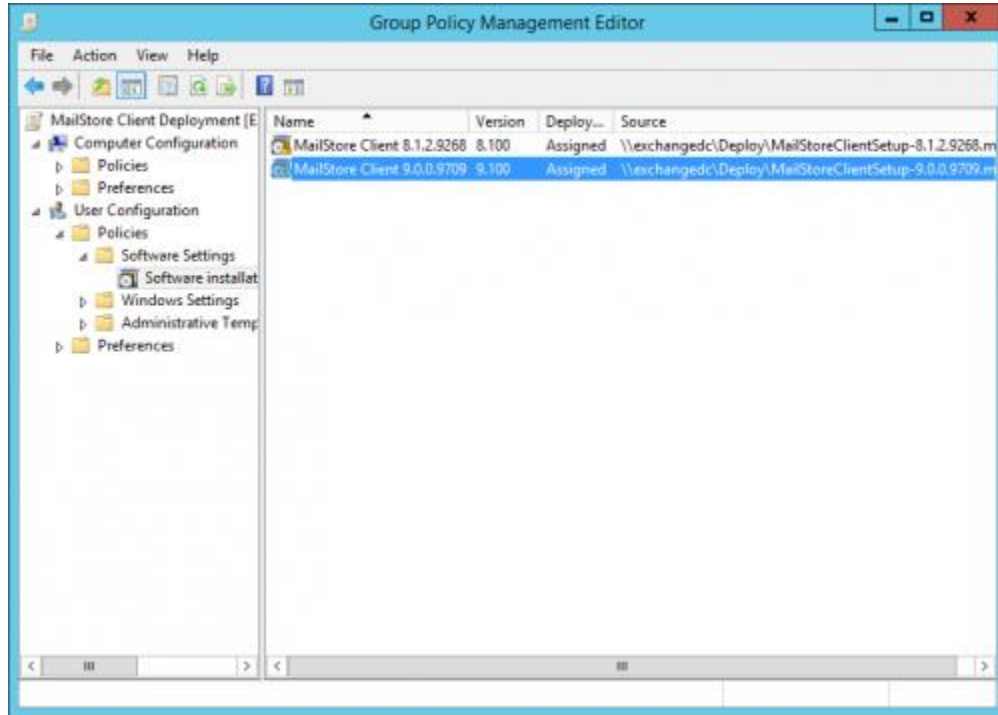
- On the next screen, please set the options on the *Deployment* tab as shown below:



- On the *Upgrades* tab, a list of upgradeable packages is shown. Select the option *Required upgrade for existing packages*.



- Click on *OK* to confirm all settings.
- The group policy should look similar to the one shown below:



The MailStore Client loader will be updated upon the next login of the users on their Windows workstations.

## Configuration

If MailStore Server is used within an Active Directory infrastructure, the MailStore Client and the MailStore Outlook Add-in can be configured using group policies. Settings that are configured through group policies supersede local settings and cannot be changed by users.

For this purpose, group policy templates are available as [ADM templates](#) (for Windows XP and Windows Server 2003) and [ADMX templates](#) (for Windows Vista and Windows Server 2008 or higher). The configuration options for the MailStore Client and the MailStore Outlook Add-in are the same for both templates. The *ADM templates* are provided only for the sake of completeness; only the installation of the *ADMX templates* is discussed in this article.

**Please note:** For MailStore Server 8 or lower, please use these [ADM templates](#) and these [ADMX templates](#), respectively. These templates may differ in their configuration options from the templates discussed in this article.

## Installing the ADMX Template

On Windows Server 2008 and Windows Vista or higher *ADMX templates* are usually used. These templates can either be managed locally on an administrative workstation or centrally in the domain. Please refer to [Microsoft Technet](#) for further details.

## Installation of the ADMX Templates in the Local Store

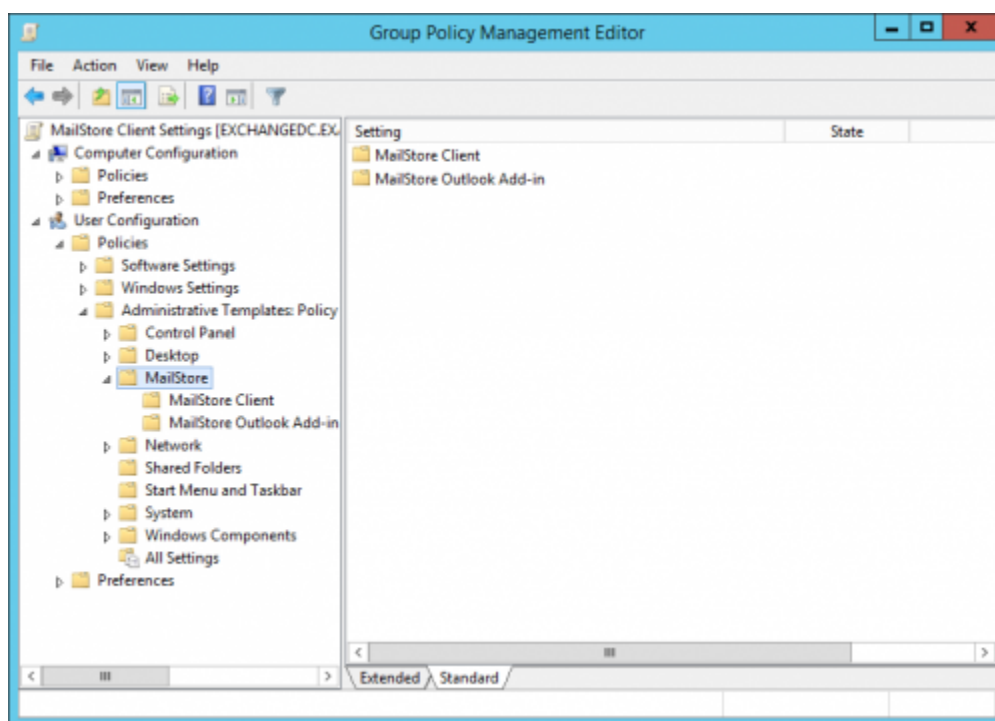
- Download the [ADMX templates](#) to your administrative workstation.
- Unzip the package to %systemroot%\PolicyDefinitions, retaining its folder structure.

## Installation of the ADMX Templates in the Central Store

- Download the [ADMX templates](#) to your domain controller.
- In the SYSVOL folder, unzip the package to domain\policies\PolicyDefinitions, retaining its folder structure (default: %systemroot%\sysvol\domain\policies\PolicyDefinitions).

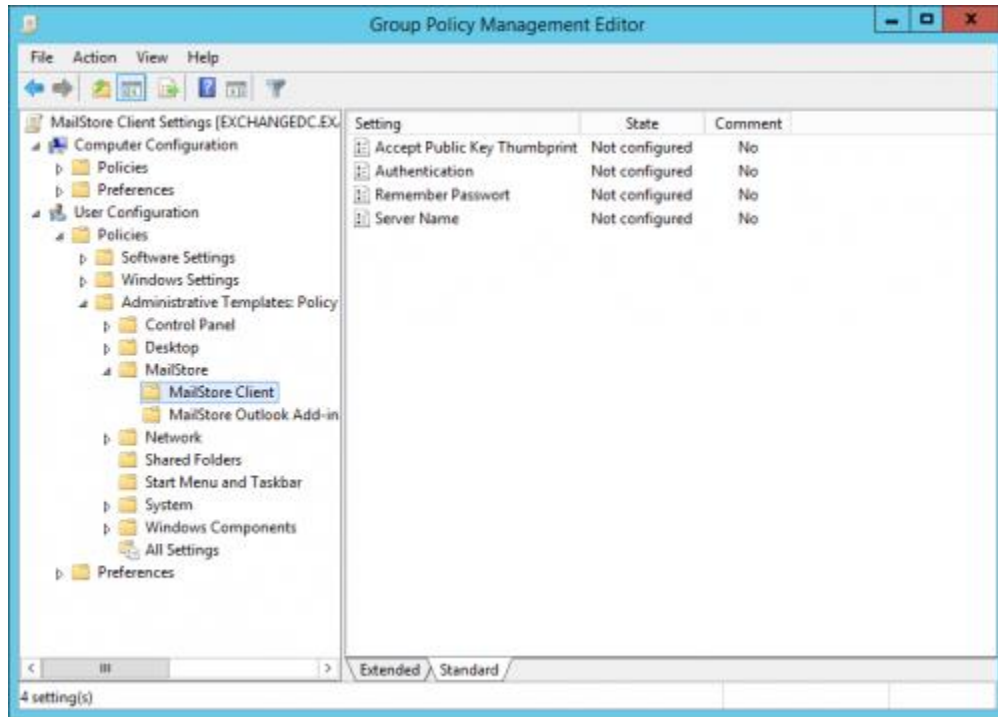
To verify the installation and for further configuration, please proceed as follows:

- Open the *Group Policy Management Console*.
- Right-click on the administrative folder *Group Policy Objects*.
- Select *New* and create a new group policy object called *MailStore Client Settings*.
- Right-click on the new GPO and select *Edit...*
- Expand *User Configuration > Policies > Administrative Templates*.
- If the templates have been installed correctly, an entry *MailStore* and sub-entries *MailStore Client* and *MailStore Outlook-Add-in* exist.



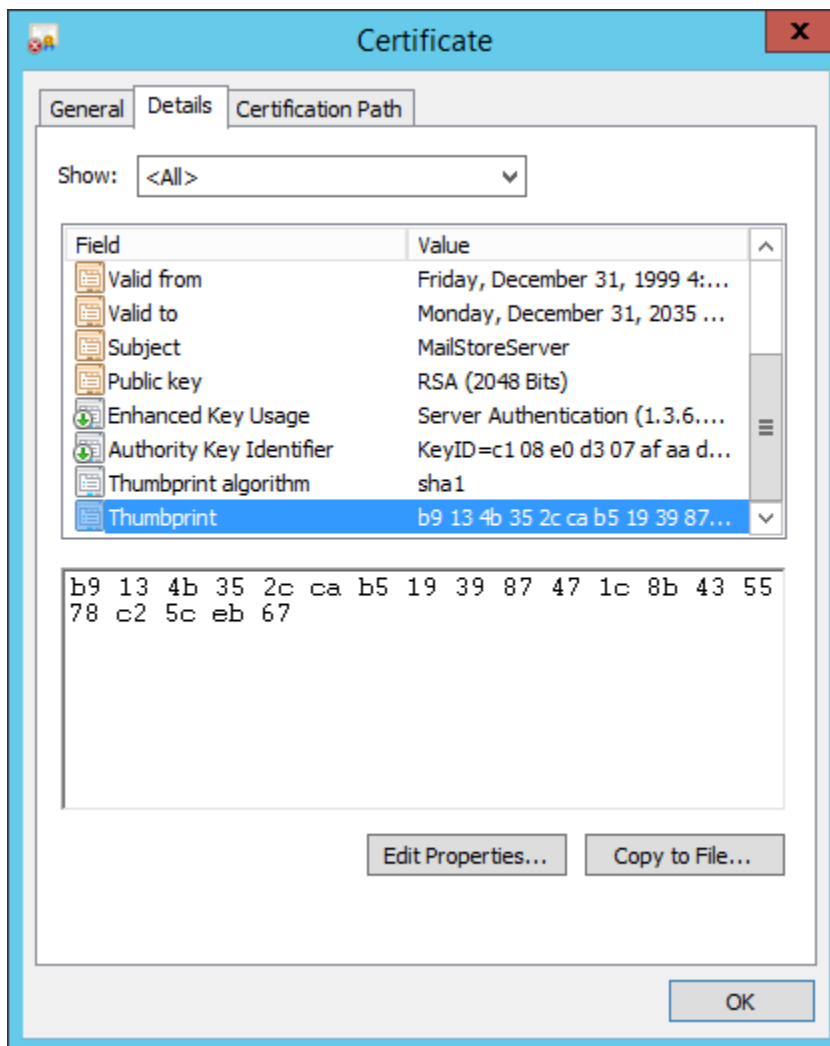
- Open the *Group Policy Management Console*.
- Right-click on the administrative folder *Group Policy Objects*.
- Right-click on the existing group policy object called *MailStore Client Settings* and select *Edit...*

- Expand *User Configuration > Policies > Administrative Templates > MailStore > MailStore Client*.



- These options are available:
  - *Accept Public Key Thumbprint*

If the public key thumbprint of the MailStore Server client certificate is provided, the MailStore Client will start without a certificate warning even if the certificate is not trusted on Windows level, e.g. if self-signed certificates are being used. You can find the public key thumbprint in the certificate's properties under *Details > Thumbprint*. It has to be entered here in capital letters and without any dividing blanks.



- *Authentication*

Sets the authentication method to either *Standard Authentication* or *Windows Authentication*.

- *Remember Password*

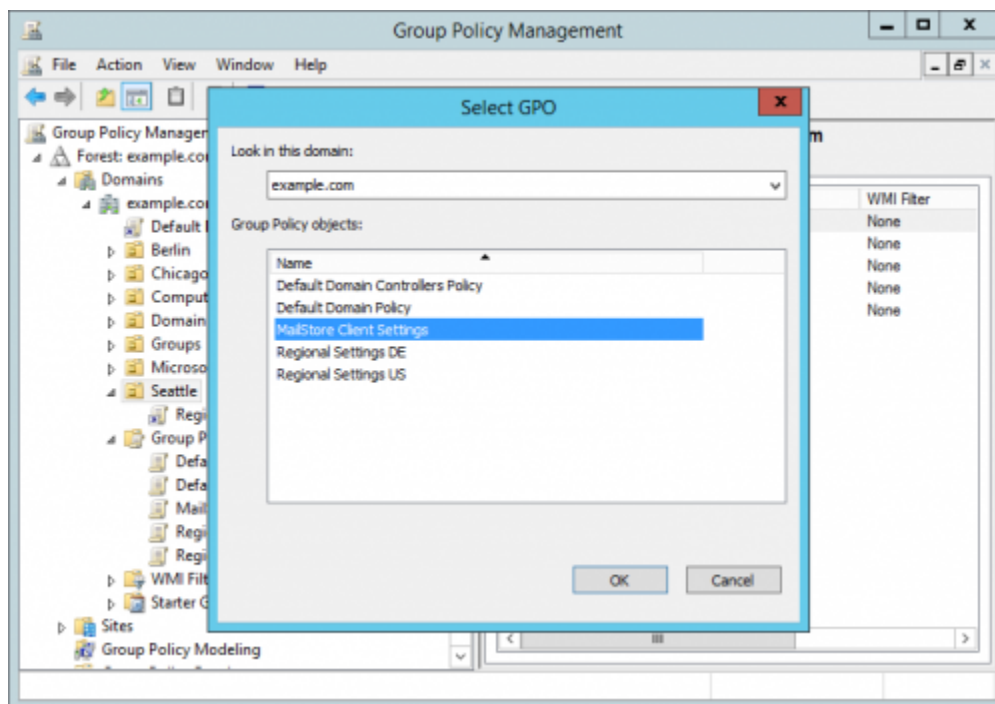
This setting stores a user's password, once entered, locally on the client, provided that the authentication method has been set to *Standard Authentication* as well.

- *Server Name*

If this parameter is provided, the MailStore Client always connects to this server. If the authentication method has also been set to *Windows Authentication*, the login to MailStore Server occurs directly without any user interaction (Single Sign On). If the MailStore Client access has been configured to a port different from the default (8460), this parameter has to be provided as *Server Name:Port*.

To apply these settings to users, the group policy has to be linked to the corresponding user objects. Linking is done using organizational units (OU).

- Highlight the organizational unit (OU) which contains the desired user objects, right-click on the OU (*Seattle* in the example below) and select the option *Link an Existing GPO...*
- In the dialog window *Select GPO*, highlight *MailStore Client Settings* and click on *OK*.

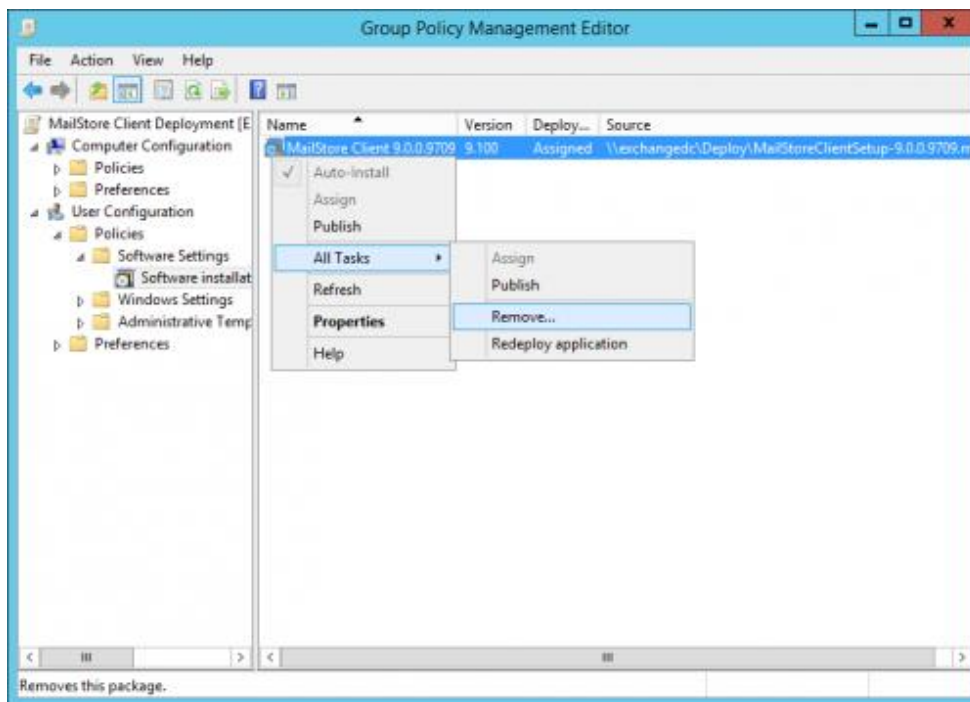


- Through the organizational unit the group policy is now linked to the user objects contained therein. The settings will become active the next time users log on to the Windows clients.

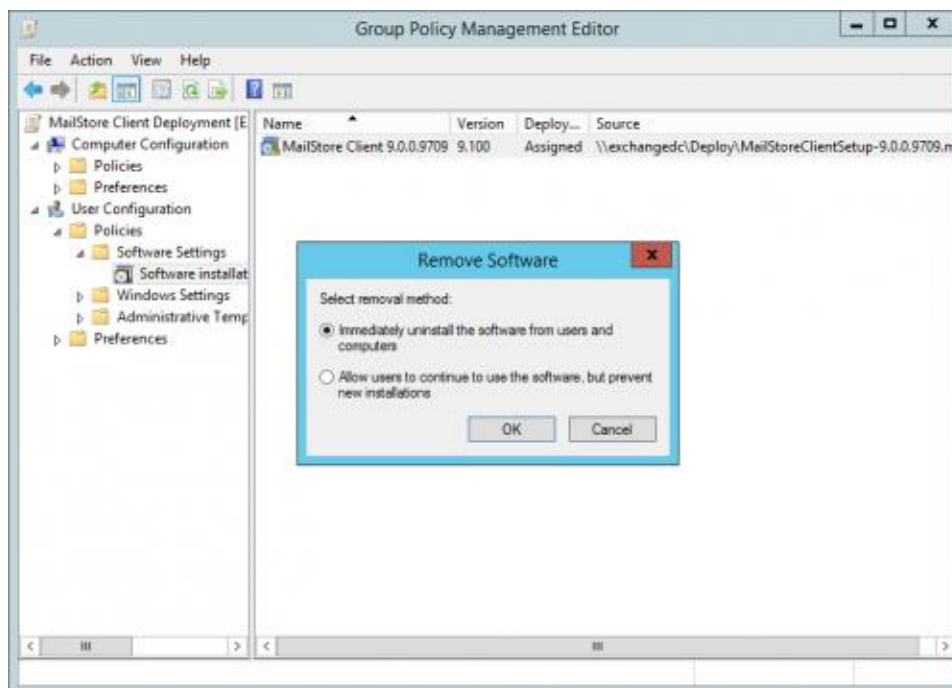
## Uninstalling

Just like the distribution, the uninstalling of software packages can be done using group policies. Please proceed as follows:

- Open the *Group Policy Management Console* on your domain controller.
- Navigate to the administrative folder *Group Policy Objects*.
- Right-click on the existing *MailStore Client Deployment* GPO and select *Edit...*
- Expand *User Configuration > Policies > Software Settings > Software installation*.
- Right-click on the package to be uninstalled and select *All Tasks > Remove...*



- In the following dialog window, select *Immediately uninstall the software from users and computers* and click *OK*.



- Close all open windows and exit the group policy editor.

The MailStore Client will be uninstalled upon the next login of the users on their Windows workstations.