



## Installation and Configuration Guide

### Overview

This document is designed to provide a quick installation and configuration guide for WinGate using the client NAT connection.

### WinGate Internet Gateway and Communications Server

WinGate is a sophisticated integrated Internet gateway and communications server designed to meet the control, security and communications needs of today's Internet-connected businesses.

.WinGate Proxy Server takes the angst out of getting your network connected to the Internet, and making sure it is protected when you get there.

Network Address Translation (NAT), multiple protocol Proxy Servers and circuit-level proxies provide access and fine-level control. Support for Automatic proxy configuration, DHCP, and integration with your Active Directory or Domain user databases ease administration burdens. A full email server provides all your email requirements, plus support for content filtering and antivirus scanning with two great WinGate plugins.

WinGate Proxy Server lets you control Internet usage, providing quick and secure access for whatever requirements your business may have.

### Where to download Wingate

Download the latest installation file from our website here:

<http://www.ccsoftware.ca/wingate/download.cfm>

When prompted, select to save the file and put it somewhere like your Desktop so you'll know where it is once the download has been completed.

### Information you are going to need

This document assumes that you have a working TCP/IP based network of PCs and Internet Access from the PC that is going to act as the Gateway with the WinGate software.

---

## The WinGate Installation Process

Once you have downloaded the WinGate program double click on the wingate.exe file to initiate installation.

The actual process of installing the WinGate program is straight forward and will follow a series of installation screens described below. While most screens are fairly self explanatory, help on each screen is available throughout the installation process by clicking the **Help** button on the install screen.

### WinGate Installation: Licence agreement

Once the WinGate installation has been initiated you will be presented with the Software Licence agreement. You must agree to the terms of licence agreement before installing WinGate.

If you choose not to agree to them then you will be asked if you wish to exit the installation.

### WinGate Installation: Type of install



The first option screen of the installation asks what type of installation you wish to perform.

You should select the **Configure this Computer as the WinGate server** option. You will receive a confirmation screen before proceeding.

---

## WinGate Installation : Selecting installation directory



This directory is where the WinGate executables and resource files will be installed. This should be a local drive on the Wingate server.

The default directory is **C:\Program Files\Wingate**

You can install WinGate to another directory location if required. The installer will inform you of the amount of free space on your hard disk.

## WinGate Installation : Important



---

This screen provides a caution to explain that WinGate 6.0 now automatically detects network interfaces. Based on their IP address details WinGate will classify them as either:

- **Internal**

Usually the interface has a private class IP address, and so considered a LAN based interface. (The exception to this is where WinGate will be located behind a NAT router). These types of interfaces will be used by WinGate proxy services to listen for client requests from the LAN.

- **External**

Usually this interface will have a public class IP address and so is considered to be an Internet connection (not trusted by WinGate). These types of connections will be used by WinGate to service clients Internet requests.

### WinGate Installation : NT users and authentication



This screen is presented to users installing WinGate server to an NT- based operating system. (Windows NT, 2000, XP Pro, .NET Server)

If you select to **Use Operating System (Windows)** user database in the install program (recommended) then WinGate will create users and groups so that it is synchronized with the local NT/2000/XP user database.

---

---

This feature makes it easier to control and manage Internet users by building on the existing user and group policies configured for NT.

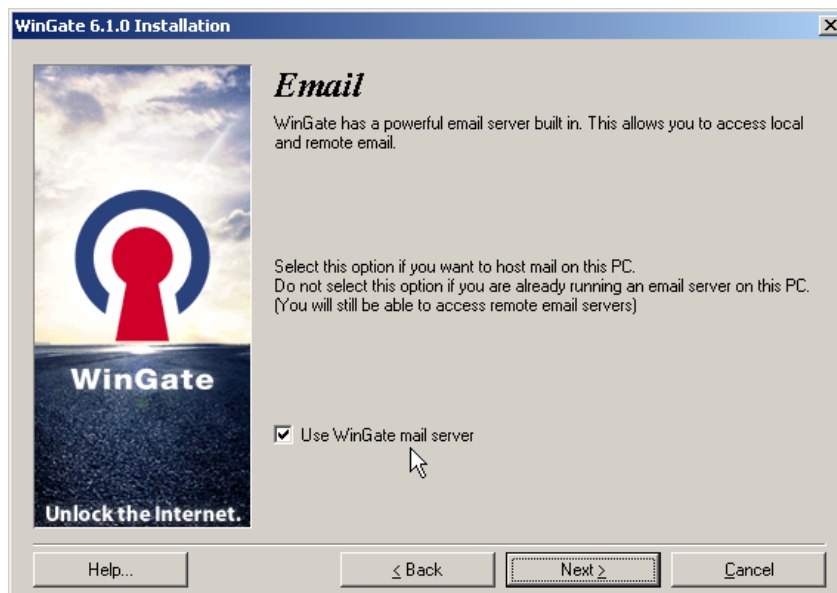
By basing your WinGate user and group database you benefit from:

- Having a single place to manage users and groups from.
- Strong NT-based authentication of users (WinGate will use NT user names and passwords to verify the identity of users on the LAN).

**Note:**

This screen ( and the NT user database option) will not be available to Win95, Win98, WinME users.

### WinGate Installation : Email



This screen allows you to decide whether or not to use the WinGate mail server. (Ticked by default)

- Check the **Use WinGate Mail Server** box to use the WinGate email server.
- Not checking the **Use WinGate Mail Server** box ( in which case the WinGate mail server will not be configured and the SMTP and POP3 Servers will not be started after the install)

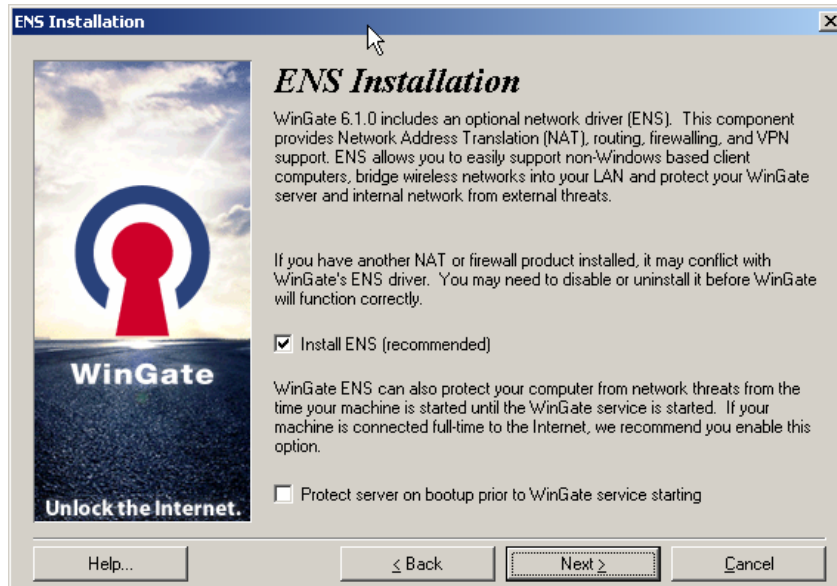
**Note:**

If your licence type permits it you can utilize the WinGate Mail Server at any stage once WinGate is installed.

---

---

## WinGate Installation : ENS (Extended Network Services)



The WinGate ENS provides amongst other things NAT (Network Address Translation) and Firewall services.

We recommend that you choose to install it. NAT enables you to share an Internet connection amongst networked computers running virtually any application on any platform (including Windows, MacOS, Unix and Linux).

It also requires NO configuration if WinGate DHCP is used.

### Protect sever on bootup prior to WinGate service starting

Here you can also select WinGate to protect your Internet Connection on startup, providing an extra layer of security for your WinGate server.

---

### WinGate Installation : Auto update



This screen is enabled by default, and allows you to select whether or not you wish to turn on the auto update feature for WinGate.

If the auto update feature is enabled, WinGate will periodically check for updated versions from the WinGate site. This feature can be turned on/off or configured in GateKeeper at any time after the installation.

### WinGate Installation : Activate WinGate



---

From WinGate Version 6.0 you will need to activate the WinGate license with the WinGate activation server on the Internet (Activation.qbik.com) before you can begin to use WinGate.

For users upgrading from a previously non Activated license (Full license versions prior to WinGate 6.0) will need to run the the License Manager to activate your license.

All license activation (including Version 6.0 Trial licenses) can be activated after the WinGate installation via the License Manager in GateKeeper.

Activation is not required during the install but as mentioned previously will be required to provide WinGate functionality prior to using WinGate for the first time. With WinGate 6.0 and above you will receive a warning when first logging into GateKeeper that you must activate a license to enable functionality (Trial or Full).

**Note:**

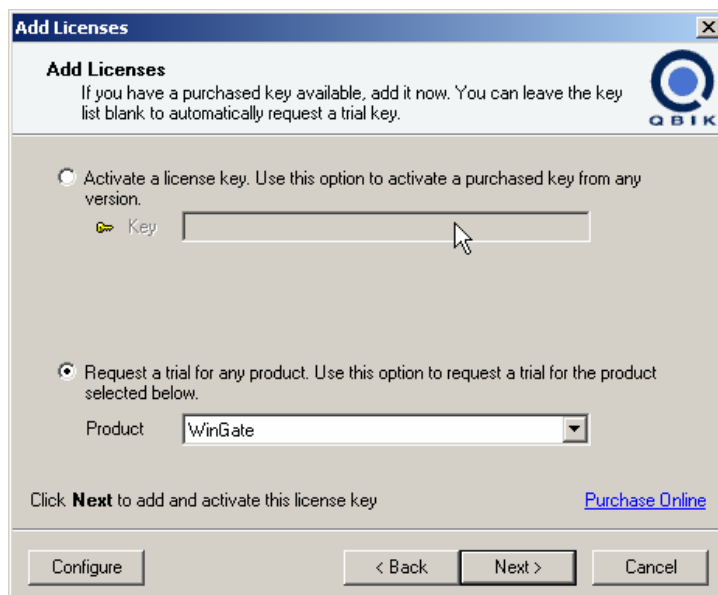
An activated license can only be used by one installation of WinGate. If WinGate needs to be relocated to another machine then you will be prompted to deactivate your license during the uninstall and reactivate it during the subsequent reinstall on the new machine.

**The Activation Process**

Clicking the **Activate** button on this screen will open the License Viewer.

**Requesting new Trial licence**

1. On the **License Viewer** click the **Add New** button.
2. In the license type window select the "**Request trial for any product...**" radio button.
3. From the drop down select **WinGate**.
4. Click the **next** button to activate the trial licence with the Activation server.
5. After activation is complete you will be asked to stop and restart the WinGate engine for the license to take effect.



---

### Previous (non activated) full licence

1. In the **License Viewer**, highlight the licence WinGate has discovered (Old Full or Trial License).
2. The **Activate** button will become highlighted, click this to activate the licence with the Activation server.
3. After activation is complete you will be asked to stop and restart the WinGate engine for the license to take effect.

### WinGate Installation : Begin installation



This step begins the installation procedure.

It will copy the appropriate files onto your computer and make some adjustments to the various system settings (e.g. Windows registry).

If you have chosen to install the WinGate server, then the WinGate engine service will start once the install is complete.

---

---

### Configuring LAN clients to make a NAT connection

Configuring WinGate clients to use NAT is relatively simple. NAT connections to the WinGate server require that the WinGate server has at least two network adapters, and there must be an internal and an external adapter listed on the network tab in GateKeeper.

#### To configure your client machines to use the NAT method:

On the client machine:

1. Open the network connection properties by accessing the Windows control panel and selecting the Network and Dial up connections icon.
2. Double click on the Local Area Connection icon that is the network interface for the LAN.
3. This will bring up the Local Connection Status dialog, click on the Properties button.
4. In the Local Connection's Properties window select Internet (TCP/IP) and click the Properties button.

**Note:** You can confirm that this is the correct interface to configure as the actual physical name of the adapter is listed at the top of the Local Connection Properties window.

5. On the TCP/IP properties window select the Default Gateway setting and enter the private IP address used by the WinGate Server.
6. In the Preferred DNS Server setting enter the private IP address used by the WinGate server.
7. No other configuration is required for this network interface.
8. Click OK through the open properties screens to save the changes.

If you have chosen to run the WinGate DHCP service then you can configure WinGate to issue clients with their IP address details:

1. Open Gatekeeper
2. Select the DHCP Service on the System tab of the Gatekeeper control panel.
3. Open the DHCP Modes screen and make sure this is set to Fully Automatic mode.
4. Click OK to apply the changes.

This will assign an IP address to the client machine. In fully automatic mode, it will also assign the IP address used by the WinGate server as the Gateway setting on the client machine, allowing clients to access the Internet via NAT through the WinGate server.

---